



..: www.totalrecallvr.com ..:

Total Recall VR RoD Client

User Guide

March, 2016

Guide Issue 13.0

Total Recall VR Release 9.20.0

Copyright © 2016 [Prolancer Pty Ltd](http://www.prolancer.com.au), Sydney, Australia.

The text of and illustrations in this document are licensed by Prolancer Pty Ltd under a Creative Commons Attribution–Share Alike 3.0 Unported license ("CC-BY-SA"). An explanation of CC-BY-SA is available at <http://creativecommons.org/licenses/by-sa/3.0/>. In accordance with CC-BY-SA, if you distribute this document or an adaptation of it, you must provide the URL for the original version. Prolancer, as the licensor of this document, waives the right to enforce, and agrees not to assert, Section 4d of CC-BY-SA to the fullest extent permitted by applicable law.

Total Recall VR™ is a trade mark of Prolancer Pty Ltd. in Australia and other countries. All other trademarks are the property of their respective owners.

The information in this publication is subject to change without notice. Prolancer Pty Ltd assumes no responsibility for any errors that may appear in this publication.



Prolancer

Related Documents:

- [1] Prolancer Pty Ltd, Total Recall VR web site. Available from:
<http://www.totalrecallvr.com/>.
- [2] Prolancer Pty Ltd, Prolancer web site. Available from:
<http://www.prolancer.com.au/>.
- [3] Prolancer Pty Ltd, Total Recall VR Embedded GUI User Guide, 13.0, March 2016
- [4] Prolancer Pty Ltd, Total Recall VR Remote Manager User Guide, 13.0, March 2016

Table of Contents

1. Preface	4
1.1. <i>Conventions</i>	4
1.1.1. Notes & Warnings	4
1.1.2. Typographic Conventions	4
1.1.3. Procedures	5
1.2. <i>We Need Feedback</i>	5
2. Introduction	6
2.1. <i>About This Guide</i>	6
2.2. <i>What is Total Recall VR?</i>	6
2.3. <i>What is RoD Client?</i>	8
3. Start Here	9
3.1. <i>System Requirements</i>	9
3.2. <i>Compatibility</i>	9
3.3. <i>Application Installation</i>	9
3.4. <i>Application Upgrade</i>	16
3.5. <i>Total Recall VR Configuration</i>	17
3.5.1. Remote Manager Interface	17
3.5.2. Signalling Mapping & Internal Dial Plan	17
3.5.3. Recording Policies	18
3.5.4. Analogue Channels	19
3.5.5. RoD Agents	19
3.6. <i>First Run</i>	21
4. User Interface	25
4.1. <i>Main Dialog</i>	25
4.2. <i>Taskbar Icon</i>	26
5. How to	27
5.1. <i>Configure the Connection to a Total Recall VR</i>	27
5.2. <i>Login/Logout with RoD Client</i>	27
5.3. <i>Control Recording</i>	28
5.4. <i>Add Notes</i>	29
6. Software License	31
7. Glossary	35
7.1.1. Terms	35
7.1.2. Abbreviations	36

1. Preface

1.1. Conventions

Our guides use several conventions to highlight certain words and phrases and draw attention to specific pieces of information.

1.1.1. Notes & Warnings

We use the following visual styles to draw attention to information that might otherwise be overlooked:



Notes are tips, shortcuts or alternative approaches to the task at hand. Ignoring a note should have no negative consequences, but you might miss out on a trick that makes your life easier.



Important boxes detail things that are easily missed: configuration changes that only apply to the current session, or services that need restarting before an update will apply. Ignoring the information will not cause data loss, but may cause irritation and frustration.



Warnings should not be ignored. Ignoring warnings will most likely cause data loss.

1.1.2. Typographic Conventions

We use typographic conventions to call attention to specific words and phrases. These conventions, and the circumstances they apply to, are as follows.

Example	Meaning
Select <u>Guide</u> to display ...	Locate the link named "Guide" on the screen, position the cursor over the link and then depress the appropriate mouse button to follow the link.
Select Add to create a new ...	Locate the button or menu item named "Add" on the screen, position the cursor over the button or menu item and then depress the appropriate mouse button to initiate an action.

Enter <i>Commission</i> ...	Locate the field named "Commission" on the screen, position the cursor over the field and then depress the appropriate mouse button to select the field. Once the cursor appears in the field, enter a value.
Choose <i>Country</i> ...	Locate the field named "Country" on the screen, position the cursor over the field and then depress the appropriate mouse button to display the available options. Then position the cursor over the desired option and depress the appropriate mouse button to select it.
Tick <i>Active User</i> ...	Locate the check box named "Active User" on the screen, position the cursor over the check box and depress the appropriate mouse button to place a visual tick in the box.
Un-tick <i>Active User</i> ...	Locate the check box named "Active User" on the screen, position the cursor over the check box and depress the appropriate mouse button to remove the visual tick in the box.
Enter \$30.95 ...	Enter "\$30.95" using the keys on your keyboard.

1.1.3. Procedures

We use numbered sequence of steps to define procedures for performing certain tasks. For example:

Procedure Title

1. This is the first step of the procedure.
2. This is the second step of the procedure.
 - a. This is the first sub-step of step 2.
 - b. This is the second sub-step of step 2.
3. This is step three.

1.2. We Need Feedback

If you find a typographical error in this guide, or if you have thought of a way to make this guide better, we would love to hear from you.

Please submit your feedback using the feedback form on our web site:

<http://www.prolancer.com.au/contact/feedback>.

If you have a suggestion for improving the guide, then try to be as specific as possible when describing your suggestion. Otherwise, if you have found an error, please include the section number and some of the surrounding text so we can find it easily.

2. Introduction

2.1. About This Guide

This guide describes the Total Recall VR RoD Client application. RoD Client is a small taskbar Java™ based PC software application, included with unlimited licenses as part of your Total Recall VR system.

The guide is intended for Total Recall VR end users. It describes how to use RoD Client to control recording (start/stop) and add notes to recordings in progress. In addition, it shows systems and network administrators how to configure Total Recall VR for use with RoD Client.

Please keep a copy of this guide handy for quick reference.

2.2. What is Total Recall VR?



Total Recall VR is a professional audio logging and call recording system which is self-contained, fully featured and cost-effective. Enterprises and governments worldwide use it to create electronic records of many forms of audio communication including telephone, 2-way radio, broadcast radio, public address, room microphones and much more.

Total Recall VR is the ideal solution for:

- Recording business telephone conversations;
- Recording agent calls in contact centres;
- Logging emergency response communication;
- Logging business operations communication;
- Logging radio broadcasts;
- Logging public announcements;
- Creating audio records of meetings, legal proceedings, public enquiries and similar events; and
- Creating compliance records to meet duty of care and legal requirements.

Total Recall VR captures all audio in digital format and stores it in a proprietary, secure and tamper proof file format in its on-board hard drive storage. The file format preserves

the originality of the audio that it stores and has a number of built-in mechanisms that aid quick and reliable detection of tampering. However, for ease of access, Total Recall VR client applications can generate copies of recordings in a number of popular and everyday formats such as Microsoft's Wave (.wav) and MPEG Layer-3 (.mp3).

Storing audio by itself does not help when looking for one recording in a store that can hold hundreds of thousands of recordings. That is why, in addition to audio, Total Recall VR captures and then stores information related to each recording and audio source in its database such as start time, end time and duration of recordings, calling and called numbers on telephone calls, DTMF digits during calls, user configurable notes and much more. This information is the backbone of a powerful search capability which can pin point a single recording in a set of hundreds of thousands of recordings which reside either on the on-board hard drives of a Total Recall VR or in one of many types of off-system archives of recordings.

In addition to the audio recorder and the on-board storage, each Total Recall VR system comes with a built-in media player with comprehensive player controls (start, stop, fast-forward, rewind ...). The player can play audio stored in files directly on the system or stream audio to a remote client application which then outputs the sound to the PC speakers of the PC that it runs on.

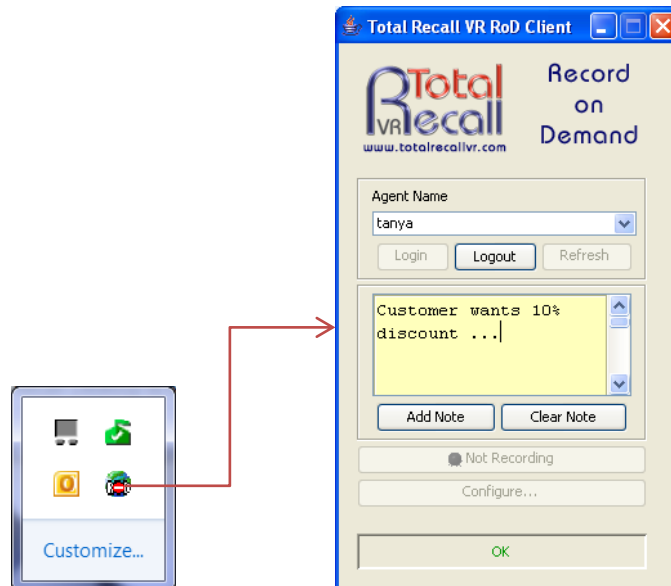
While audio recording, storage and re-play are the main functions of Total Recall VR, every Total Recall VR offers many more advanced, professional-grade features. For example:

- Ability to capture audio from different types of audio sources (analogue, VoIP, and ISDN), at the same time – hybrid recording.
- Live and real-time monitoring (listening) of recordings in progress on the system itself or on a remote PC with the aid of a PC client application.
- Feature-rich archiver which can create searchable archives of recordings on CD, DVD or BD discs, USB keys or drives and network drives, either automatically or on-demand.
- Automated self-cleaning mechanism that removes obsolete recordings automatically and on regular intervals to keep the system operating endlessly.
- Automated transcoder which compresses audio to free space on the on-board hard drives.
- SNMP agent capable of generating SNMP alarms (traps).
- SMDR integration for a number of popular PBXes.
- Fully internationalised user interface; all menus and software available in multiple languages.
- Role based access control.
- On-board LCD display and control keypad on selected models.
- A number of PC client applications with unrestricted use license.

When audio records are critical to your operations, Total Recall VR delivers. It is professional, reliable and fully self-contained solution for audio logging and call recording that comes at an affordable price.

2.3. What is RoD Client?

RoD Client is a small taskbar Java™ based PC software application, included with unlimited licenses as part of your Total Recall VR system.



Compatible with Windows™ 2000/XP/Vista/7, RoD Client allows you to control which of your calls will be recorded and kept and which will be discarded.

RoD Client offers:

- Single click recording control which allows users to choose whether their current call will be recorder in full, in parts or not recorded at all.
- Interface for adding notes to calls in progress. The notes are stored in the metadata associated with the recording. As a result, users can use key-words that appear in the notes to locate recordings when using Remote Manager.



Go to <http://www.totalrecallvr.com/downloads> to download the installation files for RoD Client, or use the CD supplied with your system.

3. Start Here

3.1. System Requirements

RoD Client is a Java based application that is designed to run on a Windows based PC.

RoD Client should be installed on a PC with (minimum specification shown):

- Windows XP/Vista/7 operating system. The application runs on 32 and 64 bit Windows 7.
- 100Gb free hard disk space.
- 2Gb memory (RAM).
- Display hardware that supports the 1024x768 resolution.
- 10Mbps Ethernet network interface (NIC) hardware.

3.2. Compatibility

RoD Client will connect to a Total Recall VR. The software version of RoD Client must match the software version of the application that runs on the Total Recall VR.



If there is a mismatch between the software versions of RoD Client and the Total Recall VR, then RoD Client will either fail to connect to the Total Recall VR or if it connects, it will exhibit problems with some functions.

3.3. Application Installation

A RoD Client installer is supplied on the software CD that is included in the box with your Total Recall VR system. The installer is a single self-extracting executable named TRVRRoDClient-Setup-x.y.z.yyymmdd.exe, where x.y.z.yyymmdd is the software version of the application.

The file is located in the RoDClient folder on the CD as shown on the subsequent screen capture.

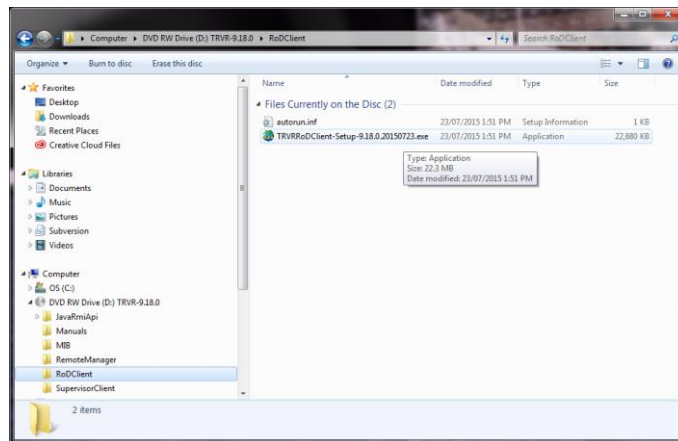


Figure 1: RoD Client Installer Location on the Software CD

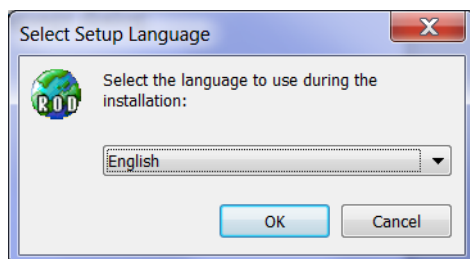


If you have misplaced the software CD that came with your Total Recall VR, then go to <http://www.totalrecallvr.com/downloads> to download the installer for RoD Client.

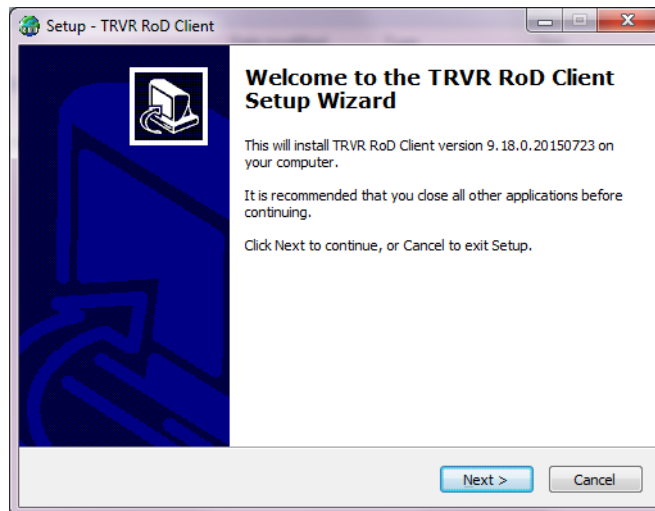
The installer is a wizard based installation program which will guide you through the installation steps. To install RoD Client on your PC:

Install RoD Client

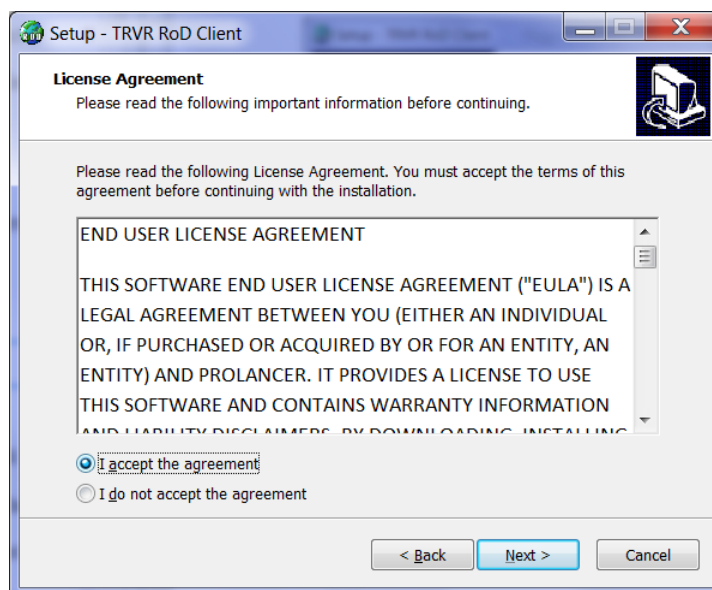
1. Double-click on the TRVRRoDClient-Setup-x.y.z.yyyymmdd.exe file to launch the installer.
2. The installer will start and display the Select Setup Language dialog:



3. Choose the language that you wish to use during the installation. Then select **OK** to display the initial dialog of the installation wizard.



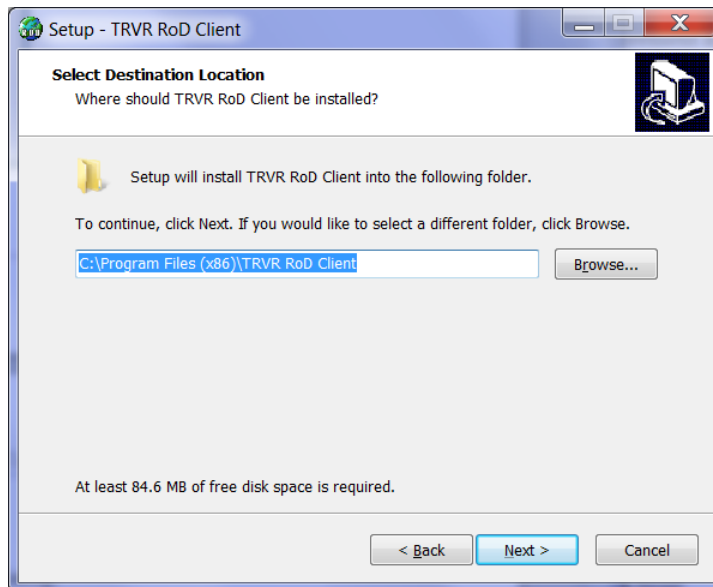
4. Select **Next>** to display the License Agreement dialog:



5. Read and understand the license agreement. Then tick ***I accept the agreement*** to continue the installation.

You must accept the agreement as written in order to install RoD Client on your PC.

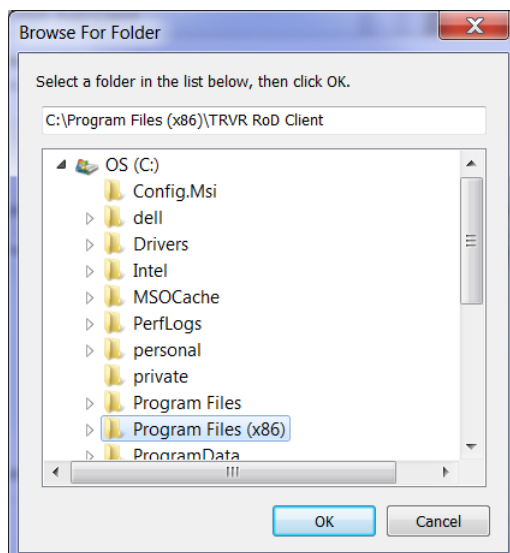
6. Select **Next>** to display the Destination Location dialog:



This dialog allows you to select the root folder where the installer will place the RoD Client application files. By default, the installer places application files in:

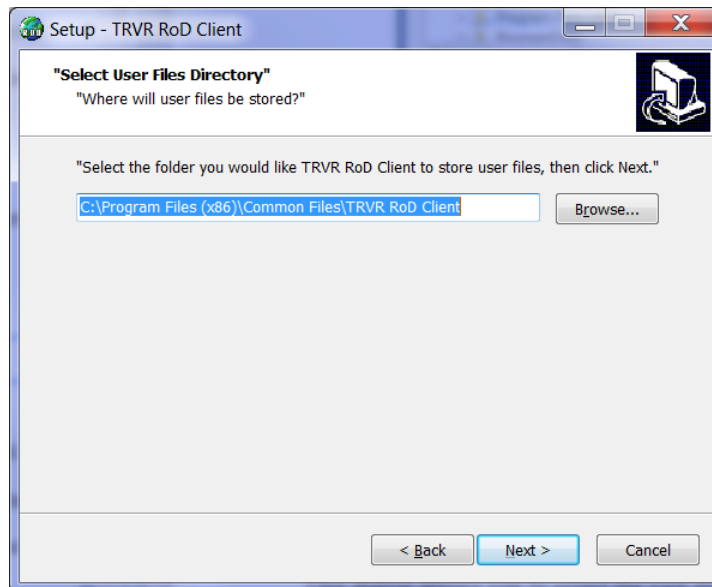
- Windows 7 64 bit system: 'C:\Program Files (x86)\TRVR RoD Client'.
- All other systems: 'C:\Program Files\TRVR RoD Client'.

If you wish to change the root folder where the installer will place the RoD Client application files, then select **Browse** to display the Browse for Folder dialog:



Then select a folder and select **OK**.

7. Select **Next>** to display the User Files Location dialog:

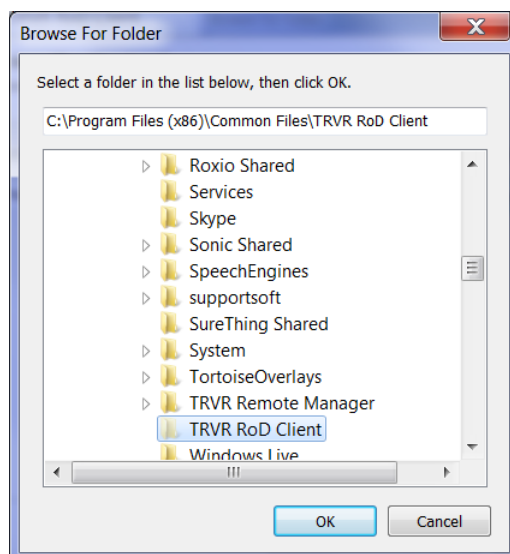


This dialog allows you to select the root directory where RoD Client will store its configuration. By default, the installer will configure RoD Client to use:

- Windows 7 64 bit system: 'C:\Program Files (x86)\Common Files\TRVR RoD Client'.
- All other systems: 'C:\Program Files\Common Files\TRVR RoD Client'

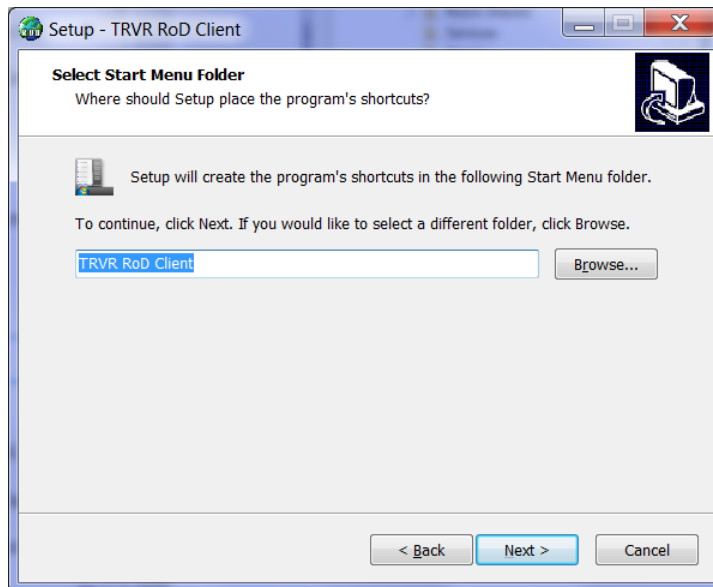
If you wish to allow multiple Windows users to use RoD Client, then leave the default or select a directory with read and write access for all Windows users that will use RoD Client.

If you wish to change the root directory where RoD Client will store its configuration, then select **Browse** to display the Browse for Folder dialog:



Then select a folder and select **OK**.

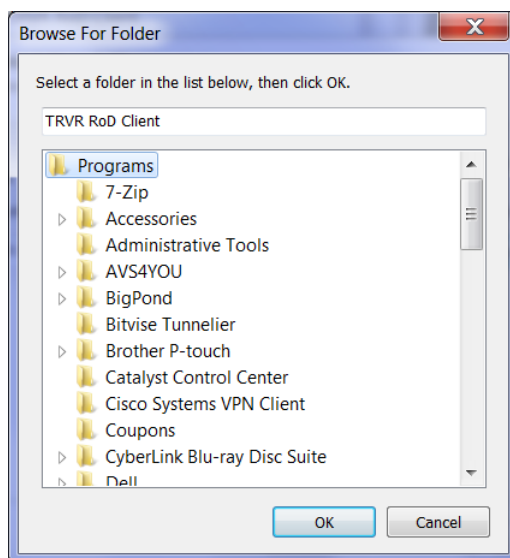
8. Select **Next>** to display the Start Menu Folder dialog:



This dialog allows you to select the name of the Start Menu folder which will contain the shortcuts for the RoD Client application.

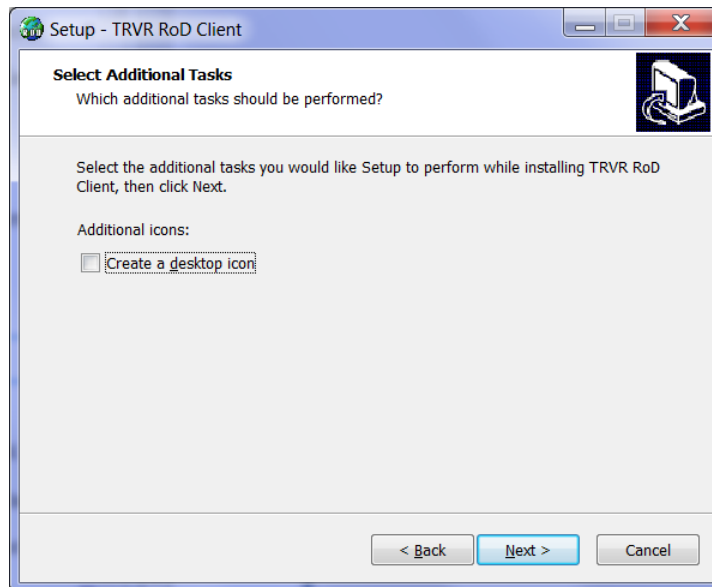
By default, the installer will create a folder named 'TRVR RoD Client' and place all application shortcuts in it.

To change the folder, either enter a name for it, or select **Browse** to display the Browse for Folder dialog:

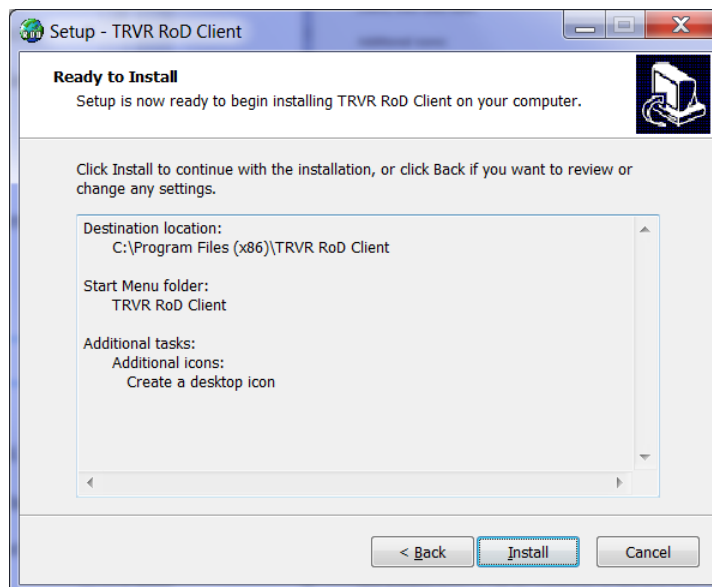


Then select a folder and select **OK**.

9. Select **Next>** to display the Additional Tasks dialog:



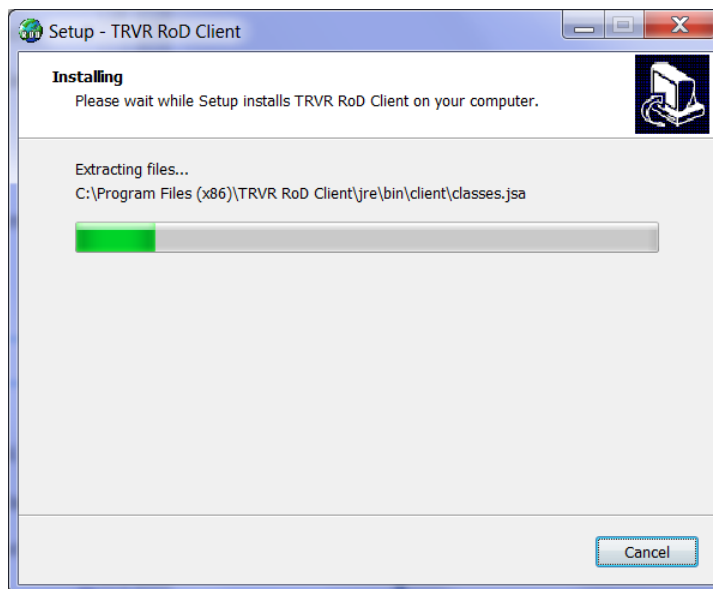
10. Optionally tick **Create a desktop icon** if you wish to have an icon on the desktop that will launch RoD Client.
11. Select **Next>** to display the Ready to Install dialog:



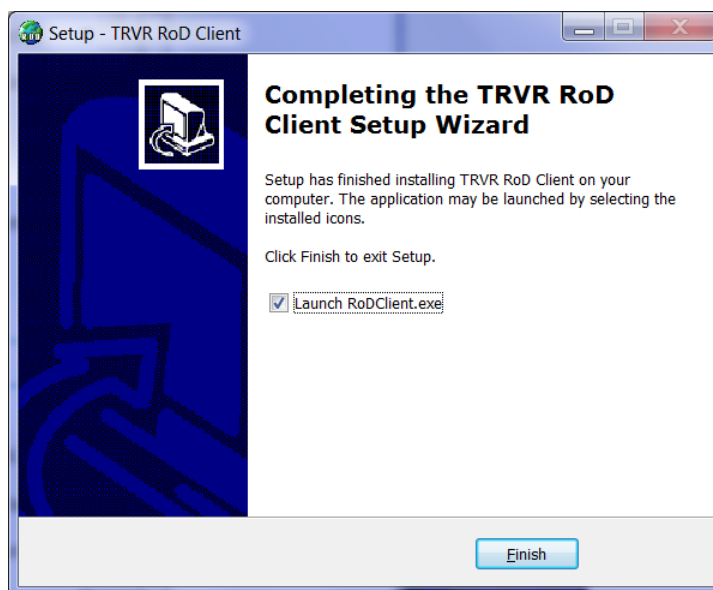
This dialog shows a summary of all settings that will guide the installer during the installation of RoD Client.

If you are unhappy with any of the settings, then select < **Back** until you reach the dialog that allows you to change them.

12. Select **Install** to install the application. This installer will start the installation and show progress as follows:



13. When done, the installer will show the final dialog:



14. Optionally, tick ***Launch RoDClient.exe*** if you want to run RoD Client immediately after you select **Finish**.

15. Select **Finish** to complete the installation.

If you ticked ***Launch RoDClient.exe*** during step 14, then RoD Client will start immediately after the installer closes the last dialog.

3.4. Application Upgrade

To upgrade RoD Client, first uninstall the old version and then install the new version using the installation procedure.

When you uninstall RoD Client, the uninstaller does not remove the directory where RoD Client stores its configuration files. By default, this directory is:

- Windows 7 64 bit system: 'C:\Program Files (x86)\Common Files\TRVR RoD Client'.
- All other systems: 'C:\Program Files\Common Files\TRVR RoD Client'.

However, this can be any other directory as explained in step 7 of the installation procedure.

If you specify the same directory during the installation of the new version of RoD Client, then the new version will automatically inherit the settings of the previous version.

Otherwise, if you specify a different directory, then you will need to configure RoD Client again when you run the new version of RoD Client for the first time.

3.5. Total Recall VR Configuration

To use RoD Client with a Total Recall VR, you must first configure Total Recall VR. The configuration includes:

- Remote Manager Interface (use the Embedded GUI [3] or Remote Manager [4]).
- Signalling Mapping (use Remote Manager [4]).
- Internal Dial Plan (use Remote Manager [4]).
- Default and extension specific Recording Policies (use the Embedded GUI [3] or Remote Manager [4]).
- Analogue Channels (use the Embedded GUI [3] or Remote Manager [4]).
- RoD Agents (use Remote Manager [4]).

3.5.1. Remote Manager Interface

RoD Client uses the Remote Manager Interface provided by Total Recall VR systems to connect and interact with Total Recall VR system.

Section 6.5 Remote Manager Interface in the Total Recall VR Embedded GUI User Guide [3] explains how to configure the Remote Manager Interface on Total Recall VR models that feature a built-in screen.

Alternatively, see section 11.2.4 Remote Manager Interface in the Total Recall VR Remote Manager User Guide [4] which explains how to configure the Remote Manager Interface on all Total Recall VR models.

3.5.2. Signalling Mapping & Internal Dial Plan

The Total Recall VR Embedded GUI User Guide [3] and the Total Recall VR Remote Manager User Guide [4] explain the concept of Total Recall VR Extensions. In addition they explain how Total Recall VR uses its configuration (in particular Signalling Mapping and Internal Dial Plan) to classify identifiers for the source and the destination of recordings as Total Recall VR Extensions.

Total Recall VR Extensions are fundamental to the operation of RoD Client. If a recording is not assigned a Total Recall VR Extension, then RoD Client will simply ignore that recording.

Consequently, it is important to configure Signalling Mapping and Internal Dial Plan correctly. For details on how see the Total Recall VR Remote Manager User Guide [4].

3.5.3. Recording Policies

Recording policies define the behaviour of RoD Client.

When an agent logs in with RoD Client, they specify the Total Recall VR Extension that they wish to control with RoD Client. If a recording policy exists for that extension, then it will apply to the operation of the RoD Client. Otherwise the default Recording Policy applies to the operation of the RoD Client.

The following table explains how the setting of the **Recording Mode** parameter, which is part of every recording policy, modifies the behaviour of the RoD Client:

Recording Mode	RoD Client Operation
Record By Default	<p>Allows manual control of recording retention. Users can decide, while recording is in progress, to keep or discard recordings at the end of calls.</p> <p>By default calls are recorded and recordings are kept.</p> <p>Allows adding notes to recordings while in progress.</p>
Don't Record By Default	<p>Allows manual control of recording retention. Users can decide, while recording is in progress, to keep or discard recordings at the end of calls.</p> <p>By default calls are recorded, however recordings are discarded when complete.</p> <p>Allows adding notes to recordings while in progress.</p>
Add Notes Only	<p>Does not allow manual control of recording and recording retention.</p> <p>By default calls are recorded and recordings are kept.</p> <p>Allows adding notes to recordings while in progress.</p>
Record Partial Calls	<p>Allows manual control of partial recording. Users can decide, while recording is in progress, which parts of calls to record and which not.</p> <p>By default complete calls are recorded and</p>

	<p>recordings are kept.</p> <p>Allows adding notes to recordings while in progress.</p>
Disallowed	<p>Does not allow manual control of recording and recording retention.</p> <p>By default calls are recorded and recordings are kept.</p> <p>Does not allow adding notes to recordings while in progress.</p>

Consequently, it is important to configure Recording Policies for Total Recall VR Extensions which will be under RoD Client control.

3.5.4. Analogue Channels

It is important to configure analogue channels correctly when using RoD Client in environments where DTMF and CLI information is not available on the telephone lines that are connected to the analogue channels. This is typical of deployments where Logger Patches are used to connect desktop phones to Total Recall VR.

If DTMF and CLI information is not available, then Total Recall VR will not be able to determine Total Recall VR Extensions for recordings. As a result, RoD Client will simply ignore recordings.

The correct analogue channel configuration when CLI and DTMF information is not available is:

1. Set channels for VoX triggering.
2. Disable DTMF detection.
3. Set unique extensions for analogue channels.

The Total Recall VR Embedded GUI User Guide [3] and the Total Recall VR Remote Manager User Guide [4] contain details on how to configure analogue channels.

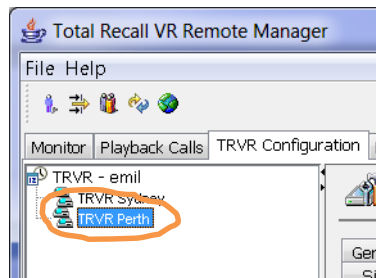
3.5.5. RoD Agents



Configure RoD Agents with Remote Manager [4] on Total Recall VR systems in order to use RoD Client with the Total Recall systems.

To add a RoD Agent to the configuration of a Total Recall VR:

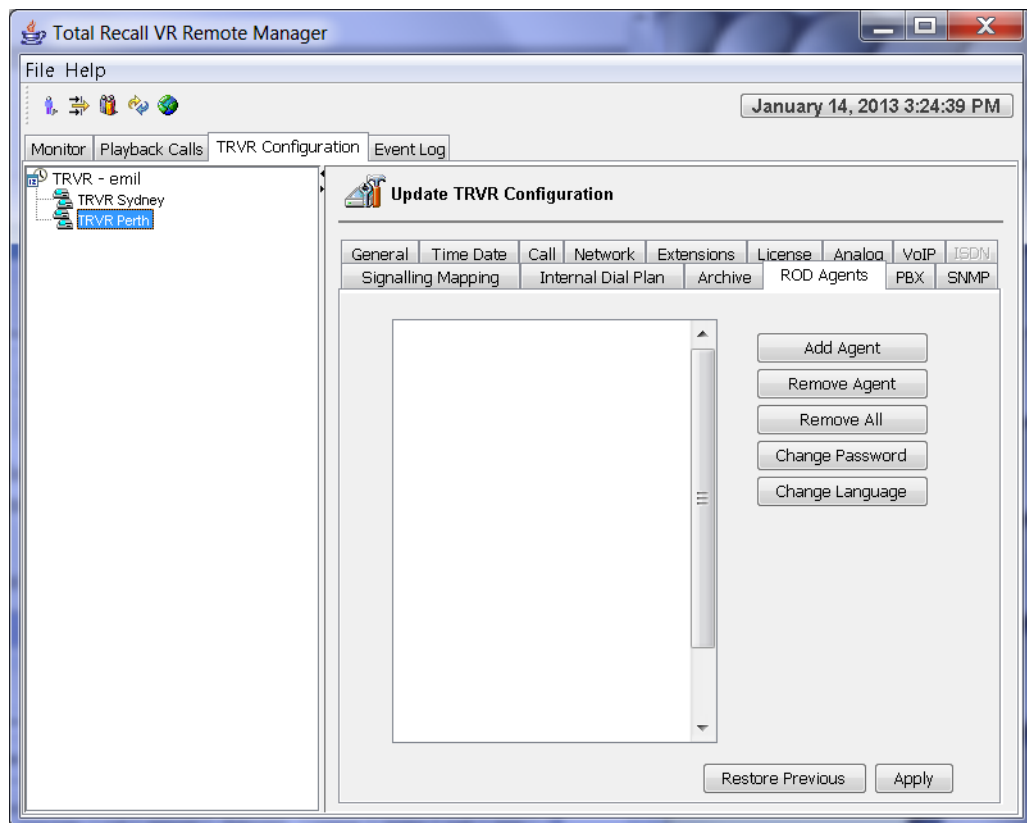
Create a RoD Agent

1. Select a Total Recall VR:



Note that you can only select a Total Recall VR if the connection icon is: . If the icon is: , then Remote Manager is not able to connect to the Total Recall VR.

2. Navigate to the RoD Agent tab:



3. Select **Add Agent** to display the Add Agent dialog:



4. Enter **Agent Name**. RoD Client users will use this name to log in with RoD Client.
5. Enter **Agent Password** and **Confirm Agent Password**. Both must be the same. RoD Client users will use this name to log in with RoD Client.
6. Choose **Language**. This is the display language that RoD Client will use when the agent logs in.
7. Select **OK**. Remote Manager does not actually update the configuration of the Total Recall VR at this stage. It only remembers the new parameters.
8. Repeat steps 3 to 7 to add additional agents.
9. Select **Apply** to update the configuration of the Total Recall VR.
10. Alternatively, select **Restore Previous** to discard all changes.

The changes are immediate, i.e. users can log in with RoD Client which connects to the selected Total Recall VR immediately.

You can use the RoD Agent tab to manage (add, remove and change passwords) the configuration of agents.

3.6. First Run

RoD Client requires a connection to a Total Recall VR to run. As a result, when you run RoD Client for the first time, it will ask you to enter connection parameters.

To configure a connection to a Total Recall VR you must know the following information about the Total Recall VR:

1. The password of the Administrator on the Total Recall VR.
2. The configuration of the Remote Manager Interface on the Total Recall VR system.

The default Administrator password on Total Recall VR systems is 0000. Of course, it could be set to another value. Contact whoever is managing your Total Recall VR and obtain the correct password(s) from them.

You can determine (and if required, change) the configuration of the Remote Manager Interface on Total Recall VR systems with a built-in display from the Options Menu Screen. For example:

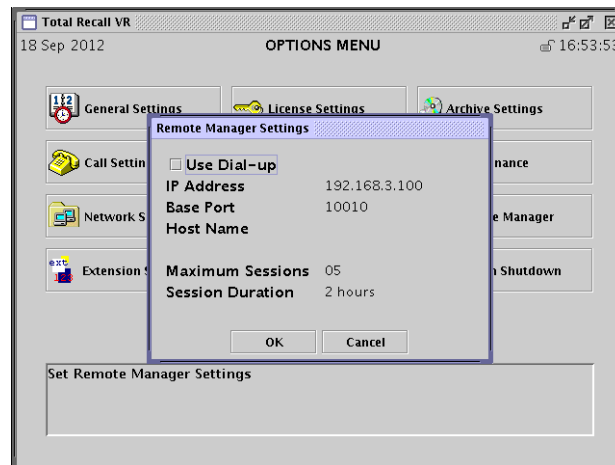


Figure 2: Total Recall VR Remote Manager Interface Configuration

The Total Recall VR Embedded GUI User Guide [3] explains the Options Menu Screen and the configuration of the Remote Manager Interface in detail.

Alternatively, use Remote Manager [4] to determine the configuration of the Remote Manager Interface on all Total Recall VR models from the Configuration tab. Visit the Network configuration tab as shown on the subsequent screen capture.

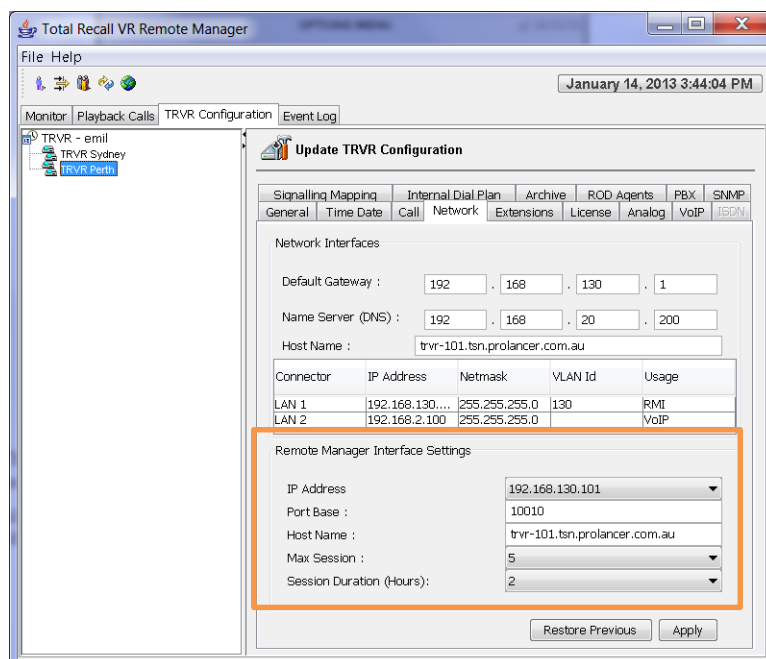
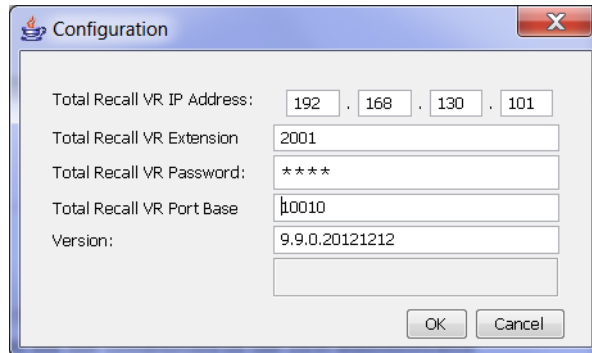


Figure 3: Total Recall VR Remote Manager Interface Configuration

To configure a connection to a Total Recall VR:

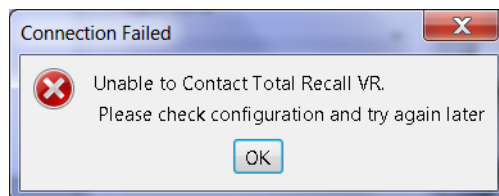
RoD Client First Run

1. When you start RoD Client for the first time it will display the Connection dialog which will ask you to enter parameters that are required to create a connection to a Total Recall VR.



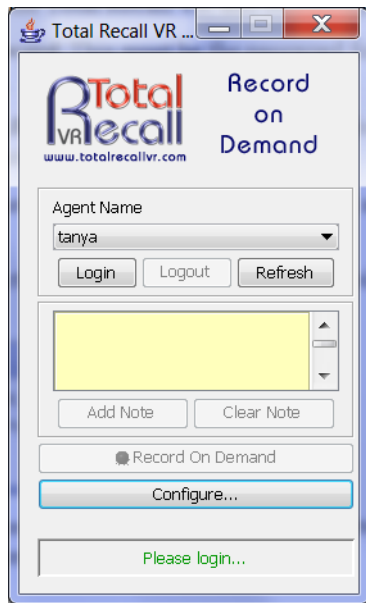
2. Enter **Total Recall VR IP Address**. This must be the IP address from the Remote Manager Interface configuration on the Total Recall VR.
3. Enter **Total Recall VR Extension**. This must be a valid Total Recall VR Extension as determined by the Total Recall VR and its configuration.
4. Enter **Total Recall VR Password**. This must be the Administrator password on the Total Recall VR.
5. Enter **Total Recall VR Port Base**. This must be the base port from the Remote Manager Interface configuration on the Total Recall VR.
6. Select **OK** to attempt a connection to the Total Recall VR and start the RoD Client application.

If RoD Client fails to connect to the Total Recall VR, then it will show an error message:



In this case you have to correct the problem: configuration, networking etc. before you make another attempt to configure the connection. Select **Configure ...** on the main dialog to display the Connection dialog where you can correct the configuration for the connection.

7. If RoD Client successfully connects to the Total Recall VR, then it will display its main dialog.



If you change the configuration of the Remote Manager Interface on a Total Recall VR system, then you must change the configuration of connections to that Total Recall VR in RoD Client.

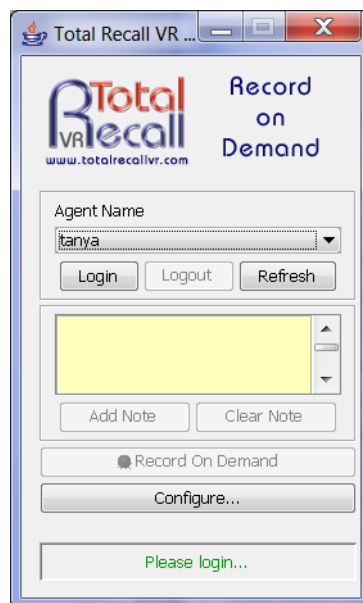
4. User Interface

RoD Client has a simple user interface which comprises of:

1. Main Dialog.
2. Taskbar Icon.

4.1. Main Dialog

The Main Dialog has two operating modes: one when an agent is not logged in and another when an agent is logged in.



If an agent is not logged in, then RoD Client ignores all recordings in progress.

In this mode RoD Client shows a list of all agents that are configured on the Total Recall VR. Users can select an agent name and login with RoD Client (select **Login** to initiate the login process).

If an agent name does not appear in the list, then user can select **Refresh** to fetch an updated list of agents that are configured on the Total Recall VR.

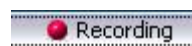
Finally, users are given the opportunity to modify the connection to the Total Recall VR while an agent is not logged in with RoD Client (select **Configure ...** to display the Connection dialog).

If an agent is logged in with RoD Client, then it is not possible to modify the connection to the Total Recall VR.

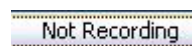
However, users can pre-type note text in the notes area and attach it as a note to a recording when recording starts and while recording is in progress.

Most importantly, in this mode RoD Client monitors recordings in progress and if a recording is assigned a Total Recall VR Extension which matches the extension in the RoD Client configuration, then RoD Client will activate the recording button. Users can use this button to control recording and retention of recordings when this button is active.

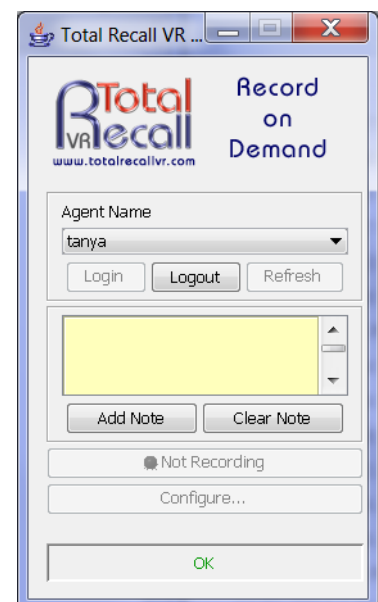
The recording button has two states:





recording state (red dot flashes) and



discarding state (no red dot).

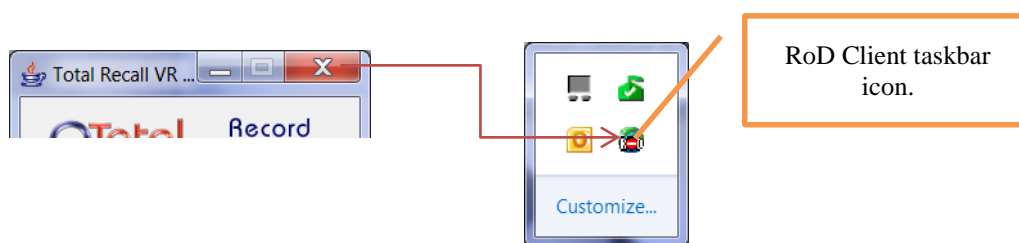


The meaning of each state depends on the setting of the **Recording Mode** parameter in the recording policy that applies to the recording. The following table contains a summary.

Recording Mode	 Recording	 Not Recording
Record By Default	Audio is being recorded and the recording will be kept at the end of recording.	Audio is being recorded; however, the recording will be discarded at the end of recording.
Don't Record By Default	Audio is being recorded and the recording will be kept at the end of recording.	Audio is being recorded; however, the recording will be discarded at the end of recording.
Add Notes Only	Audio is being recorded and the recording will be kept at the end of recording.	Does not apply.
Record Partial Calls	Audio is being appended to the current recording which will be kept at the end of recording.	Audio is being discarded.
Disallowed	Audio is being recorded and the recording will be kept at the end of recording.	Does not apply.

4.2. Taskbar Icon

When users start RoD Client, it starts and continues to run as a Windows taskbar application.



If users select the window close button on the Main Dialog, then RoD Client simply minimises to the Windows task bar; however, it continues to run in the background. Users need only click on the taskbar icon to display the Main Dialog again.

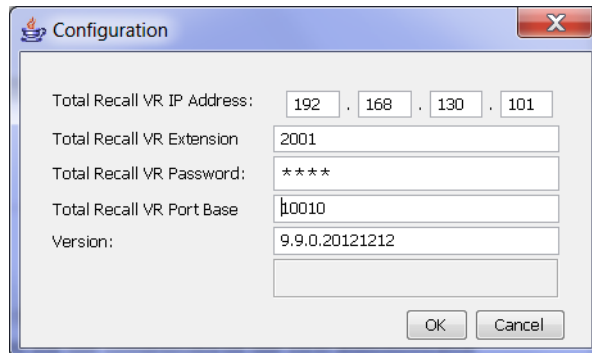
5. How to ...

5.1. Configure the Connection to a Total Recall VR

Make sure that you are not logged in with RoD Client. Then to configure the connection to a Total Recall VR:

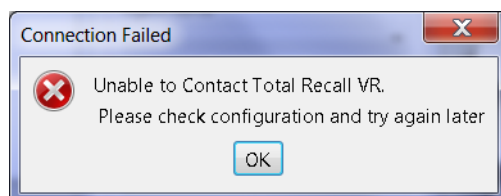
Configure the Connection to a Total Recall VR

1. Select **Configure ...** to display the Connection dialog:



2. Enter **Total Recall VR IP Address**. This must be the IP address from the Remote Manager Interface configuration on the Total Recall VR.
3. Enter **Total Recall VR Extension**. This must be a valid Total Recall VR Extension as determined by the Total Recall VR and its configuration.
4. Enter **Total Recall VR Password**. This must be the Administrator password on the Total Recall VR.
5. Enter **Total Recall VR Port Base**. This must be the base port from the Remote Manager Interface configuration on the Total Recall VR.
6. Select **OK** to attempt a connection to the Total Recall VR.

If RoD Client fails to connect to the Total Recall VR, then it will show an error message:



In this case you have to correct the problem: configuration, networking etc. before you make another attempt to configure the connection.

5.2. Login/Logout with RoD Client

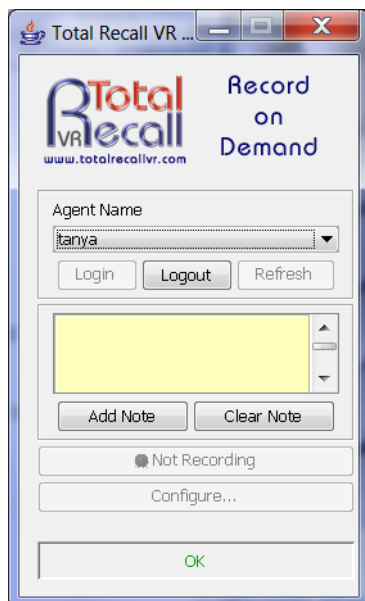
Make sure that you have a working connection to a Total Recall VR before attempting to log in with RoD Client. Then to log in:

Login with RoD Client

1. Choose **Agent Name**.
2. Select **Login** to display the Enter Password dialog:



3. Enter **Password**. This must be the password that is assigned to the agent selected during step 1.
4. Select **OK** to attempt a log in. If successful, RoD Client will enable the note and recording buttons.



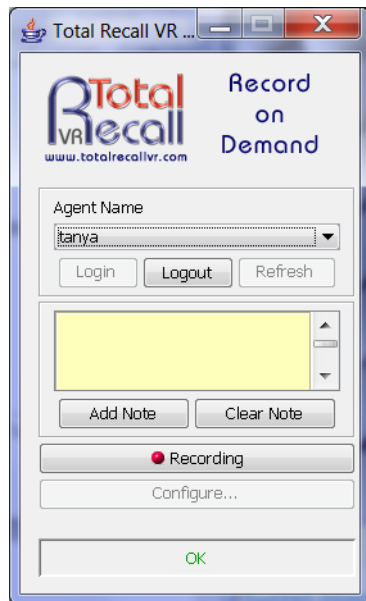
To logout simply select **Logout**.

5.3. Control Recording

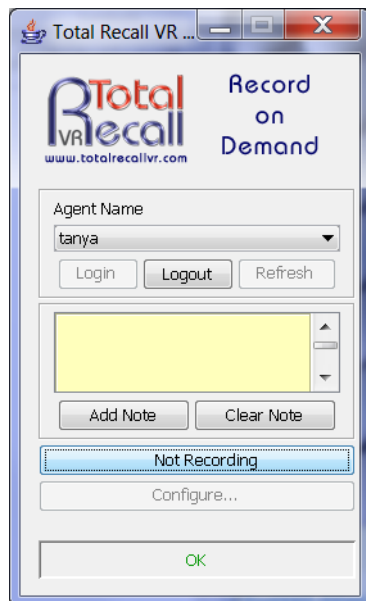
Make sure that you have a working connection to a Total Recall VR and to log in with RoD Client before attempting to control recording. Then to control recording:

Control Recording

1. RoD Client will activate the recording button when a recording with a matching Total Recall VR Extension is in progress.



2. Select **Recording** to toggle to not recording mode:



3. Repeat steps 1 and 2 as desired while recording is in progress.

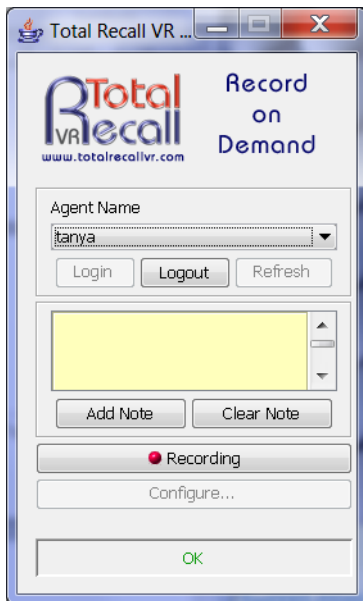
The end result depends on the setting of the **Recording Mode** parameter in the recording policy that applies to the recording. For details see the table in section 4.1 Main Dialog.

5.4. Add Notes

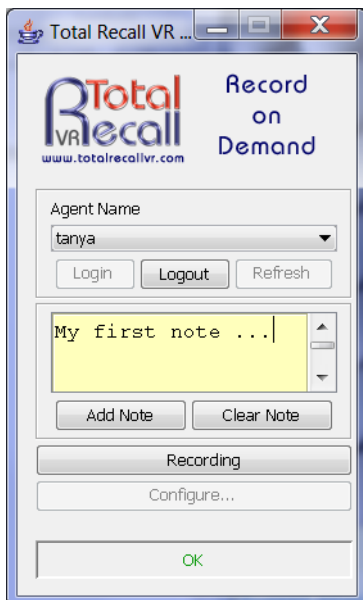
Make sure that you have a working connection to a Total Recall VR and to log in with RoD Client before attempting to add notes to recordings. Then to add notes to recordings:

Add Notes to Recordings

1. RoD Client will activate the recording button when a recording with a matching Total Recall VR Extension is in progress.



2. Enter the note text in the notes area:



3. Select **Add Note** to attach the note to the recording in progress.
4. If you wish to correct the note, then simply correct the text in the notes area and select **Add Note** again. This will replace the old note with the text in the notes area.

Note that adding notes is possible only while recording is in progress. However, you can pre-type the note text in the note area and then simply attach it to a recording once one is active.

6. Software License

END USER LICENSE AGREEMENT

THIS SOFTWARE END USER LICENSE AGREEMENT ("EULA") IS A LEGAL AGREEMENT BETWEEN YOU (EITHER AN INDIVIDUAL OR, IF PURCHASED OR ACQUIRED BY OR FOR AN ENTITY, AN ENTITY) AND PROLANCER. IT PROVIDES A LICENSE TO USE THIS SOFTWARE AND CONTAINS WARRANTY INFORMATION AND LIABILITY DISCLAIMERS. BY DOWNLOADING, INSTALLING OR USING THE SOFTWARE YOU ARE INDICATING YOUR ASSENT TO THE TERMS OF THIS LICENSE. IF YOU DO NOT AGREE TO ALL OF THE FOLLOWING TERMS, DO NOT DOWNLOAD OR INSTALL THE SOFTWARE, DISCONTINUE ITS USE IMMEDIATELY AND DESTROY ALL COPIES IN YOUR POSSESSION.

1. DEFINITIONS

- a) "Prolancer" means Prolancer Pty Ltd, an Australian company with ACN 115 942 357.
- b) "Software" means the executable code, additional tools, libraries, source files, header files, data files, any updates or error corrections provided by Prolancer, any user manuals, guides, printed materials, on-line or electronic documentation.
- c) "License Key" means a serial number issued to you by Prolancer to activate and use the Software.
- d) "Named User" is an individual authorized by You to use the Software through the assignment of a single user ID, regardless of whether or not the individual is using the Software at any given time. A non-human operated device is counted as a User in addition to all individuals authorized to use the Software, if such device can access the Software.
- e) "Maintenance Plan" is a time-limited right to technical support and Software updates and upgrades. Technical support only covers issues or questions resulting directly out of the operation of the Software. Prolancer will not provide you with generic consultation, assistance, or advice under any other circumstances.

2. LICENSE GRANTS

2.1 This Software is licensed, not sold.

2.2 Freeware License. Prolancer grants you an unlimited license to use the Freeware Features of the Software. The install packages created using only the Freeware Features can be freely redistributed and used both in commercial and non-commercial purpose.

2.3 Trial Period License. You may download and use the Software for free for thirty (30) days after installation ("Trial Period"). During the Trial Period, Prolancer grants You a limited, non-exclusive, non-transferable, non-renewable license to copy and use the Software for evaluation purposes only and not for any commercial use. At Prolancer's discretion, Prolancer may provide limited support through email or discussion forums at Prolancer's web site. The evaluation copy of the Software contains a feature that will automatically disable the Software at the end of Trial Period. Prolancer will have no liability to you if this feature disables the Software.

2.4 License After Trial Period. During the Trial Period, You have the option of paying a license fee in order to use the Software after the expiration of the Trial Period. Upon your payment of the license fee, Prolancer provides you with a permanent registration number ("License key") and grants you a limited, non-exclusive, non-transferable license to:

- a) use the Software on a Named User basis meaning specific individuals are authorized to access the Software and the total number of named users may not exceed the total number licensed by You.
- b) copy the Software in machine-readable form solely for archival and backup purposes.
- c) freely create and redistribute an unlimited number of install packages to an unlimited number of users.

2.5 The Named User of the Software may install and use the Software on up to five computers (including operating systems and Virtual Machine Environments) that are connected to each other in a network (there has to be a TCP/IP connection between these computers).

2.6 Floating License. Under the terms of a Floating License, you may install the Software on an unlimited number of machines. All machines using the Software must have the ability to communicate with a license server. The number of users that may use the Software concurrently at any time must not exceed the number of Floating User Licenses purchased for such use.

3. LICENSE RESTRICTIONS

3.1 You shall undertake any necessary steps to protect the License Key against unauthorized use.

3.2 You may not alter, merge, modify, adapt or translate the Software, or decompile, reverse engineer, disassemble, or otherwise reduce the Software to a human-perceivable form.

3.3 You may not sell, rent, lease, sub license, transfer, resell for profit or otherwise distribute the Software or any part thereof.

3.4 You may not modify the Software or create derivative works based upon the Software.

3.5 You may not decompile, disassemble or reverse engineer the Software.

3.6 You may not remove or obscure any copyright and trademark notices relating to the Software.

4. USE OF LICENSING FUNCTIONALITY

4.1 If you have licensed a qualifying edition of the Software, you may use the functionality labelled "Licensing" solely for the purposes of applying the Licensing functionality processes and/or restrictions to your products and distributing such products to your end users for their trial purposes for a predetermined period of time. For the avoidance of doubt, the foregoing limitations apply only to your use of the Licensing functionality and not your use of the Software in general.

4.2 You may not use or apply the Licensing functionality for the benefit of any software products which are not owned by you.

5. OWNERSHIP AND INTELLECTUAL PROPERTY RIGHTS

5.1 This Agreement gives you limited rights to use the Software. Prolancer retains all rights, title and interest in and to the Software and all copies thereof, including copyrights, patents, trade secret rights, trademarks and other intellectual property rights. All rights not specifically granted in this Agreement, including International Copyrights, are reserved by Prolancer. The structure, organization and code of the Software are valuable trade secrets and confidential information of Prolancer.

6. LIMITATION OF LIABILITY

6.1 Prolancer's cumulative liability to You or any other party for any loss or damages resulting from any claims, demands, or actions arising out of or relating to this Agreement shall not exceed the license fee paid to Prolancer for use of the Software.

6.2 Prolancer shall be relieved of any and all obligations for any portions of the software that are revised, changed, modified, or maintained by anyone other than Prolancer.

7. PATENT AND COPYRIGHT INDEMNITY

7.1 Prolancer represents and warrants that the Software shall not infringe or misappropriate any copyrights, patents, trade secret rights, trademarks and other intellectual property rights.

7.2 In the event the Software is found to infringe, Prolancer will have the option, at its expense, to

- a) modify the Software to cause it to become non-infringing;
- b) substitute the Software with other Software reasonably suitable to You, or
- c) if none of the foregoing remedies are commercially feasible, terminate the license for the infringing Software and refund any license fees paid for the Software.

7.3 Prolancer will have no liability for any claim of infringement based on

- a) code contained within the Software which was not created by Prolancer;
- b) use of a superseded or altered release of the Software, except for such alteration(s) or modification(s) which have been made by Prolancer or under Prolancer's direction, if such infringement would have been avoided by the use of a current, unaltered release of the Software that Prolancer provides to You, or
- c) the combination, operation, or use of any Software furnished under this Agreement with programs or data not furnished by Prolancer if such infringement would have been avoided by the use of the Software without such programs or data.

8. LIMITED WARRANTIES

8.1 THE SOFTWARE IS PROVIDED ON AN "AS IS" BASIS. PROLANCER MAKES NO WARRANTY OF ANY KIND, EXPRESS OR IMPLIED, INCLUDING WITHOUT LIMITATION ANY IMPLIED WARRANTY OR MERCHANTABILITY OR FITNESS FOR A PARTICULAR PURPOSE. WITHOUT LIMITATION, YOU ASSUME SOLE RESPONSIBILITY FOR SELECTING THE SOFTWARE TO ACHIEVE YOUR INTENDED RESULTS AND FOR THE INSTALLATION, USE AND RESULTS OBTAINED FROM THE SOFTWARE. PROLANCER MAKES NO WARRANTY THAT THE SOFTWARE WILL BE ERROR FREE OR FREE FROM INTERRUPTIONS OR OTHER FAILURES. IN PARTICULAR, THE SOFTWARE IS NOT DESIGNED FOR USE IN HAZARDOUS ENVIRONMENTS REQUIRING FAIL-SAFE PERFORMANCE. PROLANCER EXPRESSLY DISCLAIMS ANY WARRANTY OF FITNESS FOR HIGH-RISK ACTIVITIES.

8.2 Prolancer warrants that it holds the proper rights allowing it to license the Software and is not currently aware of any actions that may affect its rights to do so.

8.3 Prolancer cannot guarantee that the Software will work at all times. If you change your operating system, the software may not work anymore. You acknowledge and agree that such changes are fair and reasonable.

8.4 You should make sure that it is legal to use the Software in your country or jurisdiction. Prolancer only provides a license for You to use the software. It is Your responsibility to make sure that You are allowed to use the Software.

8.5 Prolancer reserves the right at any time to cease the support of the Software and to alter prospectively the prices, features, specifications, capabilities, functions, licensing terms, release dates, general availability or other characteristics of the Software.

9. MAINTENANCE PLAN

9.1 At any time prior to the expiration of your Maintenance Plan and 14 days after, you may purchase an extension to the current Maintenance Plan. This additional Maintenance Plan will extend the availability of your current Maintenance Plan for a period of time beginning with the date when your Maintenance Plan expires.

9.2 For a limited time after the expiration of your Maintenance Plan, you may purchase a renewal of your Maintenance Plan. This will provide you with a new Maintenance Plan that will begin at the date the renewal is purchased.

9.3 If you do not purchase any additional Maintenance Plan, you will still have the right to use the existing Software but you will lose the right to technical support and Software updates and upgrades as of the date your current Maintenance Plan expires.

9.4 For customers that purchase or already own multiple licenses, a Maintenance Plan must be purchased for each license.

9.5 Technical support is provided via electronic mail at the address specified on the web site. Prolancer will use its best efforts to provide you with technical support within forty-eight (48) business hours of your request. Please check our website to find our latest contact information.

10. SUPPORT

10.1 Except as provided herein, support for the Software is provided to you free of charge while your current Maintenance Plan is valid. If Prolancer discontinues any version of the Software, Prolancer reserves the right to limit or cease product support and updates for such discontinued version. Prolancer reserves the right to discontinue free support with thirty (30) days written notice posted to the Prolancer or the Software web site.

11. INTERNET-BASED SERVICES

11.1 Consent for Internet-Based Services. Certain Software features connect to Prolancer or service provider computer systems over the Internet. In some cases, you will not receive a separate notice when they connect. You may switch off these features or not use them. BY USING THESE FEATURES, YOU CONSENT TO THE TRANSMISSION OF THIS INFORMATION. Prolancer does not use the information to identify or contact you. For more information, see Prolancer's Privacy Policy on Prolancer's web site.

11.2 Computer Information. The Software features use Internet protocols, which send to the appropriate systems computer information, such as your Internet protocol address, the type of operating system, browser and name and version of the software you are using, and the language code of the device where you installed the software. Prolancer uses this information to make the Internet-based services available to you.

11.3 Customer Experience Improvement Program (CEIP). The Software may use CEIP, which automatically sends to Prolancer anonymous information about your hardware and how you use this software. We may use the computer information, and CEIP information, to improve our software and services. We may also share it with others, such as hardware and software vendors. They may use the information to improve how their products run with Prolancer software.

12. HIGH RISK ACTIVITIES

12.1 The Software is not fault-tolerant and is not designed, manufactured or intended for use or resale as on-line control equipment in hazardous environments requiring fail-safe performance, such as in the operation of nuclear facilities, aircraft navigation or communication systems, air traffic control, direct life support machines, or weapons systems, in which the failure of the Software could lead directly to death, personal injury, or severe physical or environmental damage ("High Risk Activities"). Prolancer and its suppliers specifically disclaim any express or implied warranty of fitness for High Risk Activities.

13. THIRD PARTY SITES AND SOFTWARE

13.1 The Software may direct you to third party Web sites. Prolancer does not control, endorse, or guarantee content, including software, data or other information found on such third party sites. You agree that Prolancer is not responsible for any content, associated links, resources, or services associated with a third

party site. You further agree that Prolancer shall not be liable for any loss or damage of any sort associated with your use of third party content. Access to these sites is provided for your convenience only.

13.2 The Software may contain third party software. By accepting this EULA, You are also accepting the additional terms and conditions with respect to such software, if any, forth herein.

14. AUDIT RIGHTS

14.1 Prolancer may audits your use of the Software to verify compliance with this Agreement. The Software is configured to enable periodic HTTP communication with Prolancer. During this communication, license information is transmitted from the Software to Prolancer to ensure license compliance. The information transmitted during these periodic updates includes the operating system, license serial number, and other relevant information to verify compliance. If you are unwilling to provide this communication capability, you may opt out of ongoing communication, but you will no longer receive Software updates and search engine configuration updates. If the usage of the Software is considered to be out of compliance with this Agreement, the Software may, without notice, cease to function.

14.2 During the audit process, Prolancer has the ability to personally identify the individual that registered with Prolancer to acquire the Software license ("Registrant") through the identification number assigned to your account at the time of registration, by using the personal information the Registrant provided to Prolancer during the registration process. Such personal information will only be used by Prolancer in connection with such audit process.

15. SEVERABILITY

15.1 If any provision hereof shall be held illegal, invalid or unenforceable, in whole or in part, such provision shall be modified to the minimum extent necessary to make it legal, valid and enforceable, and the legality, validity and enforceability of all other provisions of this Agreement shall not be affected.

16. GOVERNING LAW

16.1 This Agreement is to be governed by and construed in accordance with the laws and jurisdiction of the defending party. Service of process upon either party shall be valid if served by registered or certified mail, return receipt requested and to the most current address provided by such party. The United Nations Convention on Contracts for the International Sale of Goods shall not apply to this Agreement.

17. TERMINATION

17.1 Your license to use the Software continues until terminated. This license will terminate automatically if you fail to comply with any term hereof. No notice shall be required from Prolancer to effect such termination. You may also terminate this Agreement at any time by notifying Prolancer in writing of termination. On termination, you must destroy all copies of the Software. Your obligation to pay accrued charges and fees shall survive any termination of this Agreement.

18. ASSIGNMENT

18.1 Neither this Agreement nor any rights granted hereunder may be sold, leased, assigned, or otherwise transferred, in whole or in part, by you, whether voluntary or by operation of law. Any such attempted assignment shall be void and of no effect without the prior written consent of Prolancer.

19. ENTIRE AGREEMENT

19.1 This Agreement contains the entire agreement between Prolancer and You related to the software and supersedes all prior agreements and understandings, whether oral or written. It may be amended only by a writing executed by both parties.

7. Glossary

Our guides use certain terms and abbreviations.

7.1.1. Terms

Extensions

Extensions are a Total Recall VR concept that helps identify the source and the destination of recordings. Extensions can be numbers or any free format text. For example calling and called numbers can be classified as extensions if they match an entry in the Internal Dial Plan.

Extension Mapping

Extension mapping is a process used by the Total Recall VR to convert raw identifies of sources and destinations of recordings to user friendly identifiers. For example, when recording VoIP calls the 'From' and 'To' identifiers may be rather cryptic, say 'ext122@sip.myenterprise.com'. The extension mapping process can convert this identifier to '122' or 'Extension 122'.

Internal Dial Plan

Internal Dial Plan is Total Recall VR configuration which helps it determine which extensions are internal to the enterprise.

Recording Channel

Total Recall VR uses recording channels to capture audio on analogue, VoIP or ISDN sources. The number of recording channels can be different to the number source channels. For example, a Total Recall VR can have 20 ISDN channels while connected to an ISDN PRI link which has 30 B channels.

Remote Manager

A powerful Java™ based client application for Total Recall VR systems. It installs on Windows™ PCs and can be used to securely configure and manage multiple Total Recall VR systems over a TCP/IP network. In addition, it can be used to monitor recordings in progress in real time as well as search for and then play past recordings.

RoD Client

A small Java™ based taskbar application for Total Recall VR systems. It installs on Windows™ PCs and allows users to control in real-time which calls are recorded. In addition, enables users to add notes to recordings of calls while calls are being recorded.

Supervisor Client

A small Java™ based client application for Total Recall VR systems, It installs on Windows™ PCs and allows users to manually control (start, stop, ...) recording on analogue channels. In addition, it can be used to monitor recordings in progress in real time as well as add notes to recordings in progress.

Total Recall VR

The system that is the subject of this manual.

7.1.2. Abbreviations



Most definitions courtesy of “[Wikipedia, the free encyclopaedia](#)”.

CLI: Calling Line Identification

A telephony intelligent network service that transmits the caller's telephone number and in some places the caller's name to the called party's telephone equipment during the ringing signal or when the call is being set up but before the call is answered.

DTMF: Dual-Tone Multi-Frequency

Used for telephone signalling over the line in the voice-frequency band to the call switching centre. The version of DTMF used for telephone tone dialling is known by the trademarked term Touch-Tone, and is standardised by ITU-T Recommendation Q.23. Other multi-frequency systems are used for signalling internal to the telephone network.

IP: Internet Protocol

A data-oriented protocol used for communicating data across a packet-switched internetwork.

IP is a network layer protocol in the internet protocol suite and is encapsulated in a data link layer protocol (e.g., Ethernet). As a lower layer protocol, IP provides the service of communicable unique global addressing amongst computers.

LAN: Local Area Network

A computer network covering a small geographic area, like a home, office, or group of buildings.

TCP: Transmission Control Protocol

One of the core protocols of the Internet protocol suite, often simply referred to as TCP/IP. Using TCP, applications on networked hosts can create connections to one another, over which they can exchange streams of data using Stream Sockets.

TRVR: Total Recall VR

A professional voice logging and call recording system.

UDP: User Datagram Protocol

UDP is one of the core protocols of the Internet protocol suite. Using UDP, programs on networked computers can send short messages sometimes known as datagrams (using Datagram Sockets) to one another. UDP is sometimes called the Universal Datagram Protocol.

VOX: Voice Operated Switch

A switch that operates when sound over a certain threshold is detected.

[End of Document]