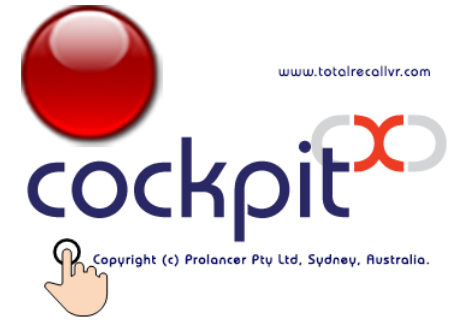


# TotalRecallVR

All inclusive desktop application for live monitoring, instant recall, incident reconstruction, recording search, replay and export, recorder management and status monitoring plus much more.



www.totalrecallvr.com

- ✔ Monitor, replay, reconstruct, search ...
- ✔ Configuration, control & status monitoring
- ✔ Access multiple recorders and archives
- ✔ Stand-alone and collaborative operating mode
- ✔ Flexible role based access control
- ✔ Firewall friendly
- ✔ Touch enabled
- ✔ For Windows® 10 and 11, Fedora 34 ...
- ✔ For PCs, tablets, embedded ...
- ✔ Supports multiple database engines
- ✔ Complementary updates
- ✔ Affordable support

Works with Infinity recorder and archive appliances and custom built recorders and archives:



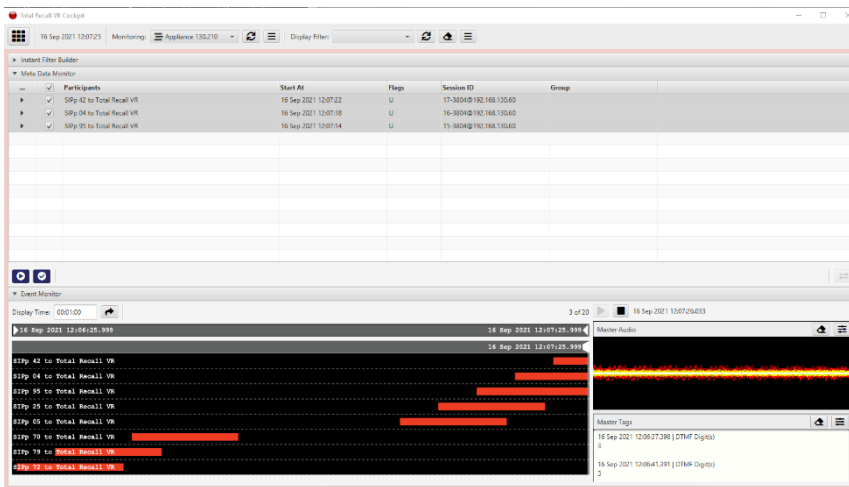
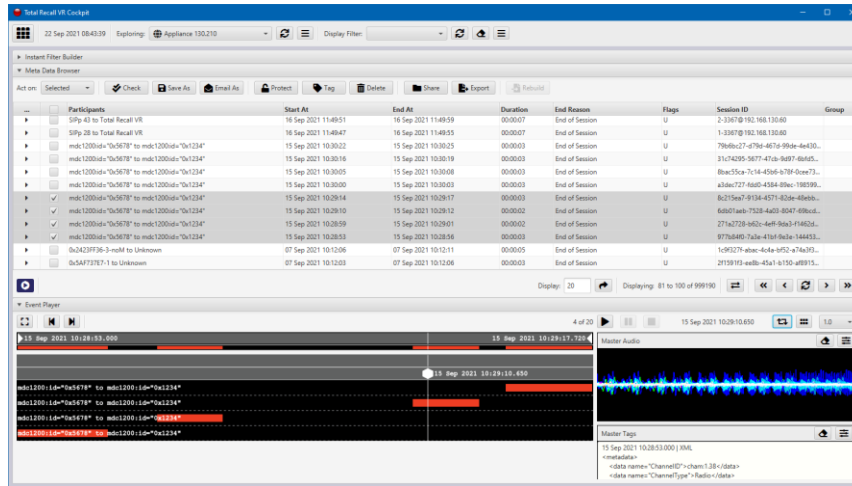
Infinity  
vs



Infinity  
es



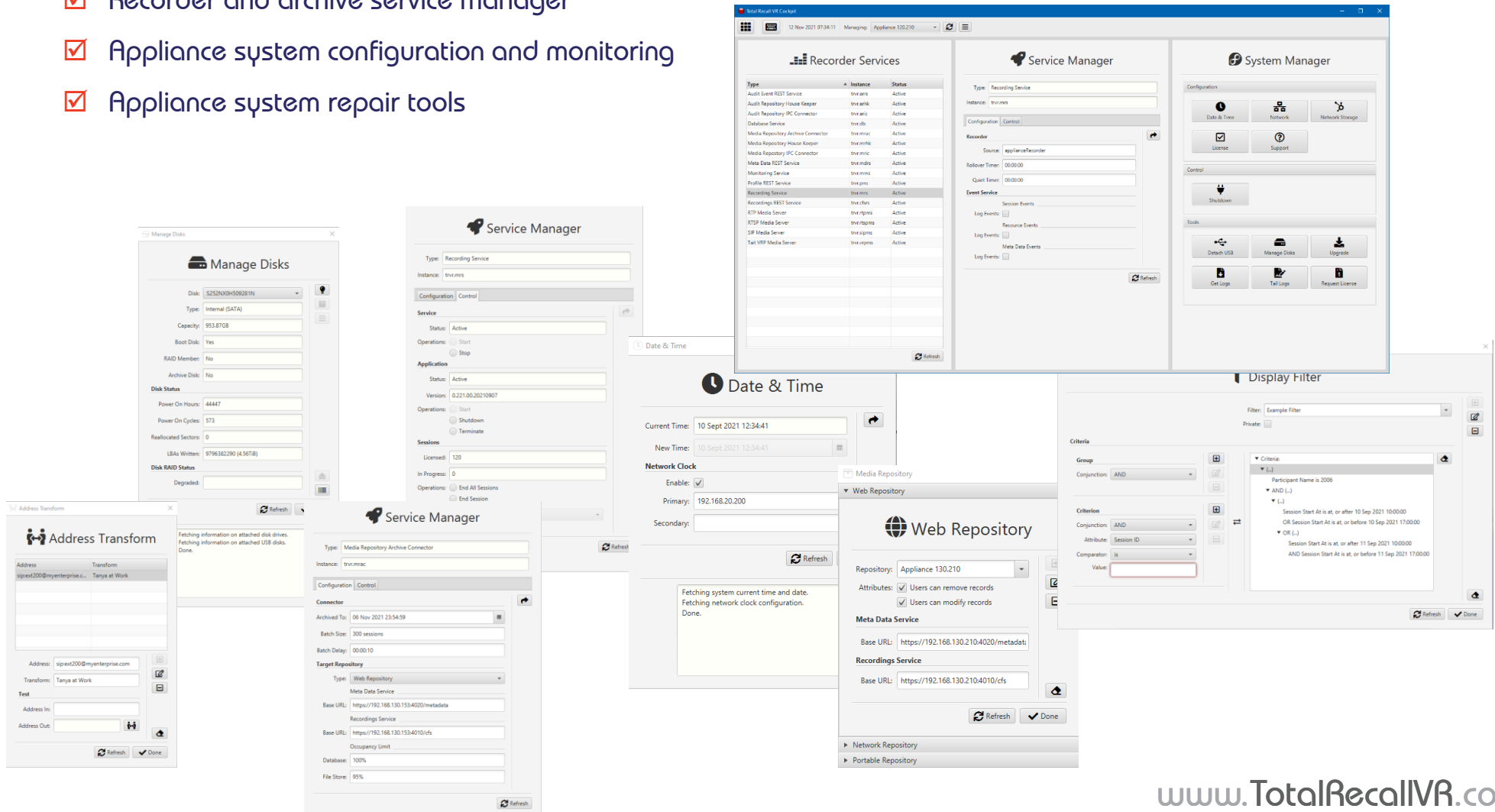
Infinity  
cs



- ✓ Multi-channel live monitoring
- ✓ Instant recall
- ✓ Multi-parameter natural language queries
- ✓ Save and share search and filter queries
- ✓ Batch recording export and sharing
- ✓ Export audio to .mp4a, .mp3, .wav, .ogg ...
- ✓ Batch meta data export and sharing
- ✓ Export meta data to .pdf, .xml, .json, .csv ...
- ✓ Lock, annotate, delete, tag ... recordings
- ✓ Incident reconstruction, export and sharing
- ✓ Timeline assisted replay
- ✓ Offline recording and incident replay
- ✓ Recording file integrity checks

- ✓ Comprehensive audit log
- ✓ Recorder and archive service manager
- ✓ Appliance system configuration and monitoring
- ✓ Appliance system repair tools

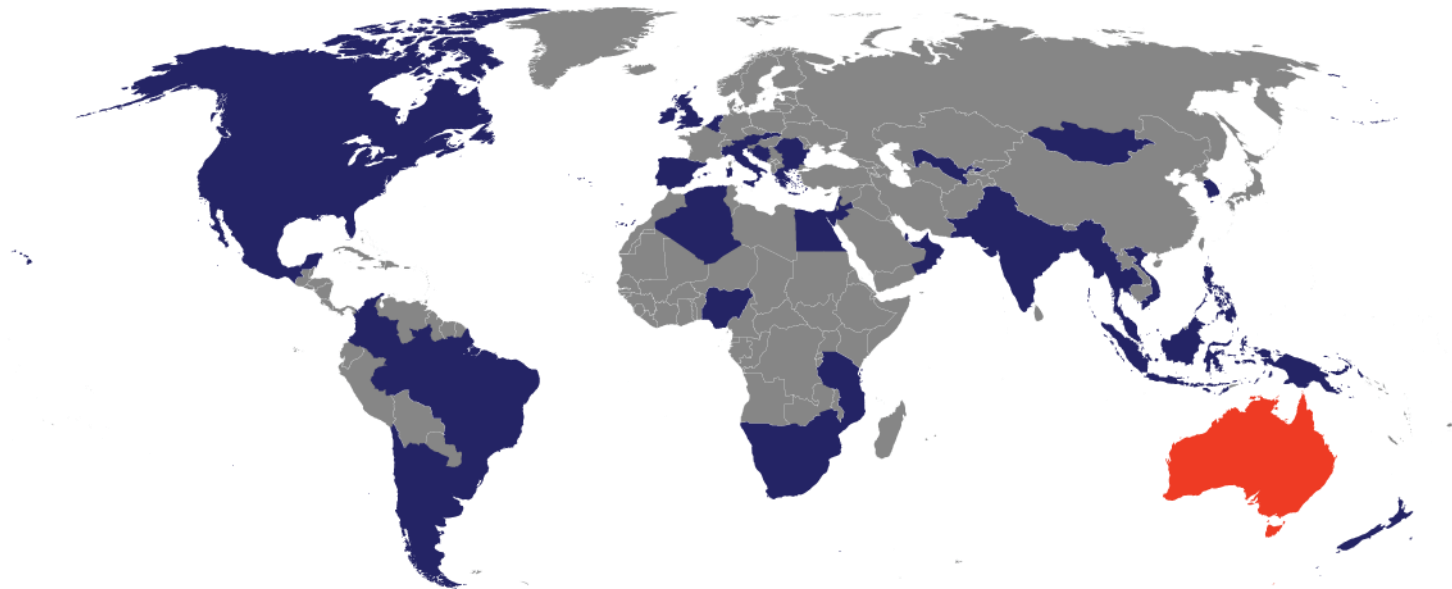
Copyright (c) Prolancer Pty Ltd, Sydney, Australia.



The image displays several overlapping screenshots of the TotalRecallVR cockpit interface:

- Recorder Services:** A table listing various services such as Audit Event REST Service, Audit Repository House Keeper, and Media Repository Archive Connector, with columns for Type, Instance, and Status.
- Service Manager:** A panel for managing a specific recording service, showing configuration options like Instance, Recorder, and Event Service.
- System Manager:** A central hub for system configuration, including Date & Time, Network, Network Storage, License, and Support.
- Date & Time:** A panel for setting the current time and network clock, with fields for Current Time, New Time, and Network Clock settings.
- Display Filter:** A panel for defining search criteria, including Group, Conjunction, Criterion, Attribute, and Comparator.
- Manage Disks:** A panel for managing disk drives, showing details like Disk ID, Type, Capacity, and RAID status.
- Address Transform:** A panel for transforming addresses, with fields for Address, Transform, and Text.
- Web Repository:** A panel for managing web repositories, showing details like Repository, Attributes, Meta Data Service, and Recordings Service.

# TotalRecallVR



All Australian design,  
development and  
manufacturing.

Equally popular with  
enterprises,  
governments, utilities,  
infrastructure, militaries  
... world wide.

[trvr@prolancer.com.au](mailto:trvr@prolancer.com.au)

+61 2 8060 3311

Total Recall VR is designed, developed and manufactured in Australia by Prolancer Pty Ltd,  
2/34a Olive Street, Kingsgrove NSW 2208, Australia.

[www.TotalRecallVR.com](http://www.TotalRecallVR.com)