



# LinX Evolution



## Next-Generation Audio Logging and Call Recording Systems

VoIP : RTP : ISDN: RoIP: Consoles : DMR

High Capacity : Cost-Effective : Incredible Flexibility



# Total Recall VR LinX Evolution

*Next-Generation IP & ISDN Voice  
Logging Recorder. Powerful &  
Flexible Solution in a Compact &  
Cost Effective Package.*



Total Recall VR LinX Evolution is the next generation of voice logging recorders from Prolancer. Combining the latest hardware technology with proven Total Recall VR call recording software and the power of CentOS Linux, Total Recall VR LinX Evolution is the powerful and reliable voice logging solution for now and into the future.

Available with a custom LCD and keypad control panel or PC-control only, this compact voice logging recorder supports up to an incredible 120 simultaneous VoIP recording channels, 60 ISDN channels, or 60 VoIP + 60 ISDN recording channels in hybrid mode. With unmatched on-board call storage and functionality for a system of this size, Total Recall VR LinX Evolution is the next step in professional voice logging recorders.

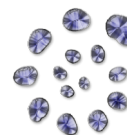
- ✓ 120 Simultaneous VoIP/RTP/DMR channels;
- ✓ 60 ISDN channels;
- ✓ 60 VoIP/RTP/DMR + 60 ISDN channels in hybrid mode.
- ✓ Seamless integration with major telephony, radio and console systems, including Tait, Hytera and Omnitronics.
- ✓ Optional custom LCD and Keypad control panel, suited to Emergency Services or other rapid-response users.
- ✓ Up to 900,000 Hours On-board storage to RAID-1 dual SATA HDDs.
- ✓ SSD Hard Disk Drive option for even better performance and reliability, especially for vehicle mounted installations.
- ✓ Archive to Blu-ray, DVD, USB devices and Network Storage (NAS).
- ✓ Convenient Remote Management and Record on Demand (PCI DSS compliant) PC applications included.
- ✓ Optional PC software packages for advanced audio search, incident reconstruction, archive management and more.
- ✓ Used in some of the most demanding environments worldwide: Military, Vehicle-Mounted, Air Traffic Control recording (ATC), major Emergency Services (E-911) and more...



Designed & Manufactured by Prolancer Pty Ltd

2/34a Olive Street, Kingsgrove 2208, NSW, AUSTRALIA

[www.totalrecallvr.com](http://www.totalrecallvr.com) | [trvr@prolancer.com.au](mailto:trvr@prolancer.com.au) | +61 2 8060 3311 |



**prolancer**



## Total Recall VR - The **Total** Solution to your Voice Logging Requirements

### Typical Total Recall VR LinX Clients:

#### Emergency Services

Police Dispatch • Ambulance • Coastal Patrol • Fire Brigades

#### Military & Government

In-Vehicle Recording • Mobile Ops Units • Departmental Recording

#### Transport & Infrastructure

Air Traffic Control • Intra-Airport Communications • Rail & Metro Comms

#### Enterprise & Call Centre

Finance • Legal • Call Centres • Trading Desks • PCI DSS Compliant

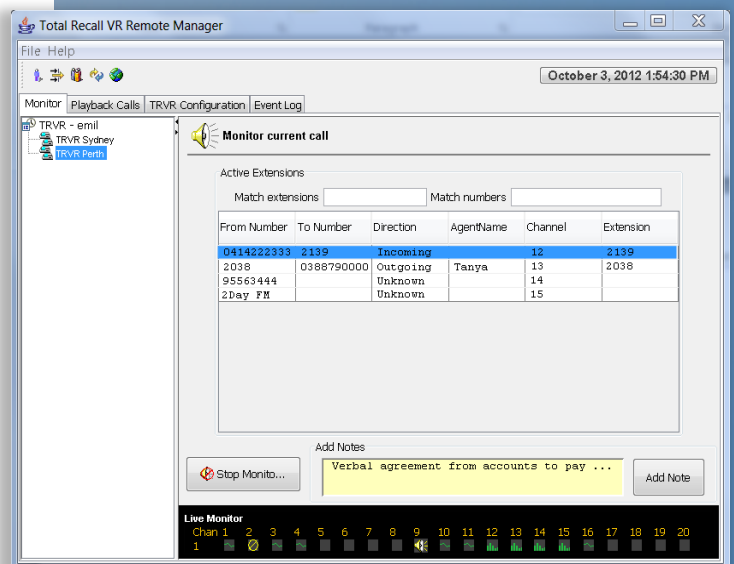
And many more...

### Reliability & Resilience Features

- ✓ **Platform based on the latest Intel hardware, and Enterprise Linux OS – built for 24/7 reliability in the toughest conditions.**
- ✓ **SNMP Alarm Integration by TCP/IP.**
- ✓ **Alerts & alarms viewable directly from our Remote Manager PC software.**
- ✓ **Tamper-proof audio file format.**
- ✓ **Total user login security control – access can be restricted to a single channel, or to specific software functions.**
- ✓ **Record-on-Demand (software or DTMF controlled) for authorised users. PCI DSS compliant.**

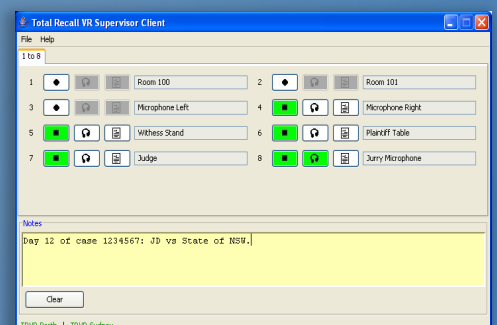
## Remote Manager PC Software

Total Recall VR Remote Manager, included with unlimited installation licences as part of your call recording solution, provides powerful configuration, monitoring, search, replay, archive and management functions: all from the comfort of your PC!



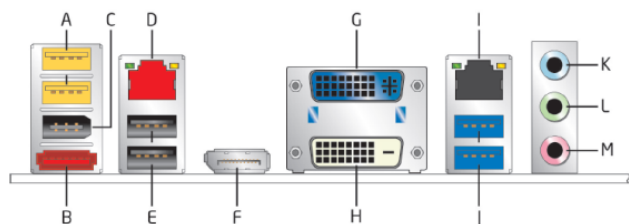
## Optional Advanced PC Apps

Our optional advanced PC apps provide highly configurable search & replay on TRVR systems and archives, multi-track waveform replay of calls, centralised continuous network archiving from one or multiple TRVR systems and/or simplified archive integrity checks & repair. Contact us (or your local TRVR reseller) for more information!



## Technical Specifications – Total Recall VR LinX Evolution and LinX Evolution GUI

|                                           |                                                                                                                                                                                                                                                                 |
|-------------------------------------------|-----------------------------------------------------------------------------------------------------------------------------------------------------------------------------------------------------------------------------------------------------------------|
| <b>System Platform</b>                    | Non-proprietary, turn-key audio recording and call logging appliance. Embedded enterprise Linux operating system. SQL Database.                                                                                                                                 |
| <b>Security</b>                           | Completely Administrator configurable per user, to channel and function level.                                                                                                                                                                                  |
| <b>Hardware Platform</b>                  | Intel motherboard with 64bit Intel CPU                                                                                                                                                                                                                          |
| <b>On-board System Control</b>            | <b>(LinX Evolution GUI Only)</b> 10.1" LCD Screen and custom backlit keypad. Included with your LinX GUI purchase.                                                                                                                                              |
| <b>Remote System Control</b>              | Remote Manager PC software. Included with unlimited installation licences. Connect to the Total Recall VR LinX system via LAN/WAN/VPN or directly via crossover network cable.                                                                                  |
| <b>PC Requirements for Remote Manager</b> | Windows Vista, 7 or 8 (32 or 64 bit). 100GB Free HDD Space. 512MB RAM. Display that supports minimum 1024x768 resolution. Sound system (including speakers or headphones). Minimum 10mbps TCP/IP network interface. CD/DVD/Blu-ray optical drive. USB 2.0 port. |
| <b>Audio Controls</b>                     | Start, Stop, Pause, Fast Forward, Fast Reverse.                                                                                                                                                                                                                 |
| <b>Configuration Utilities</b>            | Comprehensive system configuration via on-board Graphical User Interface <b>(LinX Evolution GUI only)</b> , and via Remote Manager PC Software <b>(LinX Evolution and LinX Evolution GUI)</b>                                                                   |
| <b>Audio Characteristics</b>              | Secure, proprietary format. HQVQ, 8000Hz, 7.9 Kbps, mono; SPEEX Q8, 8000Hz, 64Kbps, mono; G.711a-law, 8000Hz, 64Kbps, mono; G.711u-law, 8000Hz, 64Kbps, mono.                                                                                                   |
| <b>Recording Activation</b>               | SIP Session, H.245 Call; ISDN Q.931 Call; RTP stream (Unicast/Multicast); Tait VRP Session; Hytera DMR Session                                                                                                                                                  |
| <b>Network</b>                            | 2 x 10/100/1000 Mbps Ethernet Ports. SMDR Interface via TCP/IP                                                                                                                                                                                                  |
| <b>Time Synchronisation</b>               | Network Time Protocol (NTP) via TCP/IP                                                                                                                                                                                                                          |
| <b>VoIP Recording Interface</b>           | Passive recording via port mirroring to a range of SIP and H.323 based PaBXs, and SIP trunks; SIP, H.323, Unicast & Multicast RTP stream recording via SPAN Port; Active SIP recording.                                                                         |
| <b>ISDN Recording Interface</b>           | Passive recording via high impedance ISDN PRI link tap.                                                                                                                                                                                                         |
| <b>Channel Capacities</b>                 | <b>VoIP:</b> Up to 120 Simultaneous sessions. <b>ISDN:</b> Up to 60 simultaneous calls; <b>Hybrid VoIP/ISDN:</b> Up to 60 VoIP calls and 60 ISDN calls.                                                                                                         |
| <b>Internal Storage</b>                   | RAID-1 (dual) 1TB SATA AV-GP Hard Disk Drives<br>(Optional) SSD Storage<br>Internal Storage for up to 900,000 calls                                                                                                                                             |
| <b>Archive Device Options</b>             | Network Archiving (NAS), USB Flash Drive, USB HDD, Blu-ray Drive                                                                                                                                                                                                |
| <b>Power Options</b>                      | Universal 100-240VAC Power Supply                                                                                                                                                                                                                               |
| <b>Dimensions</b>                         | 440mm x 150mm x 340mm                                                                                                                                                                                                                                           |
| <b>Environmental Requirements</b>         | Operating Temperature: +0C (32F) to 40C (104F). Operating Humidity: 0-90% Relative Humidity, non-condensing.                                                                                                                                                    |



| Connector | Description                                     | Connector | Description                               |
|-----------|-------------------------------------------------|-----------|-------------------------------------------|
| A         | USB 2.0 high current charging ports             | H         | DVI-D connector (reserved for future use) |
| B         | eSATA connector (reserved for future use)       | I         | LAN port                                  |
| C         | IEEE 1394a connector (reserved for future use)  | J         | USB 3.0 ports                             |
| D         | LAN port                                        | K         | Audio line in (reserved for future use)   |
| E         | USB 2.0 ports                                   | L         | Audio line out (reserved for future use)  |
| F         | DisplayPort connector (reserved for future use) | M         | Mic in (reserved for future use)          |
| G         | DVI-I connector                                 |           |                                           |